

Salt Spreader

Gasoline vs Electric

Presented by: Stan Sadowski



Environmental impacts of greenhouse gas emissions caused by gasoline-powered salt spreaders:

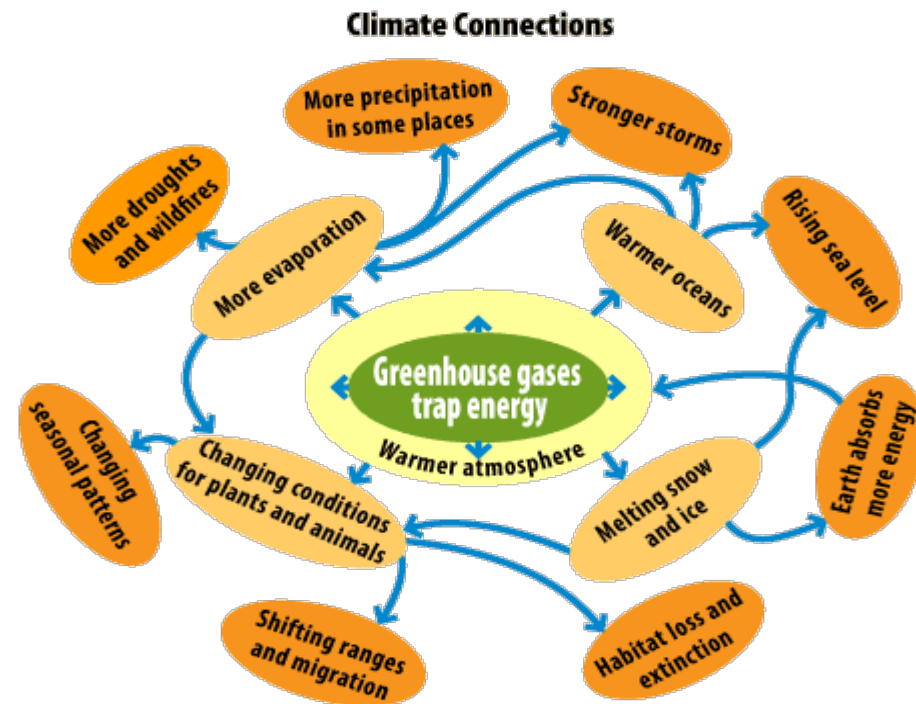
- ❖ Air Pollution
- ❖ Soil Pollution
- ❖ Water Pollution



Like any other industry, snow and ice operations must also do their part to lessen negative impacts on the environment.

Climate effects of trapped energy caused by greenhouse gases:

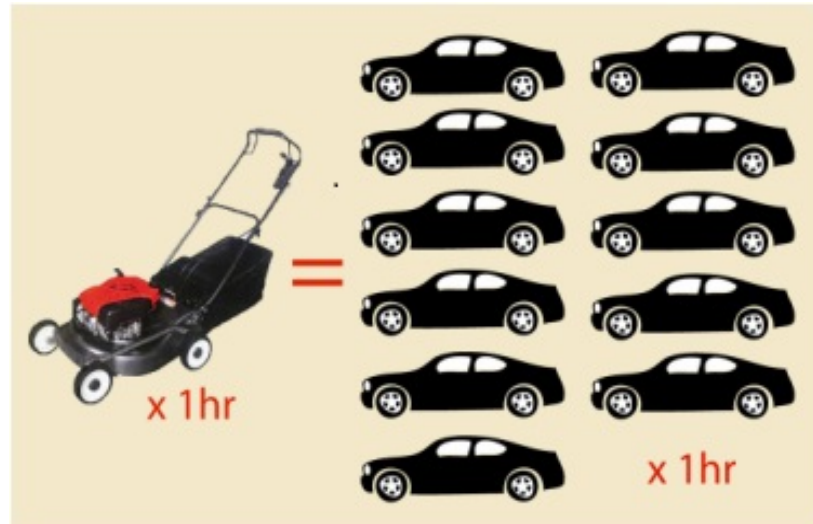
Source: <http://epa.gov/climatestudents/basics/concepts.html>



Startling Facts Regarding Non-Road Engines

The EPA states that a push lawn mower produces the same hourly pollution equivalent to 11 cars, and a riding mower emits as much pollution as 34 cars.*

*Source: <http://yosemite.epa.gov/opa/admpress.nsf/d9d1f718ae373653852572a000655936/0cb7669b182b145d852572c0005e415a!opendocument>



A push lawn mower produces the same harmful emissions as 11 cars in one hour. Therefore, a gasoline-powered salt spreader produces emissions equivalent to almost 30 cars – PER HOUR

An average 4HP push lawn mower

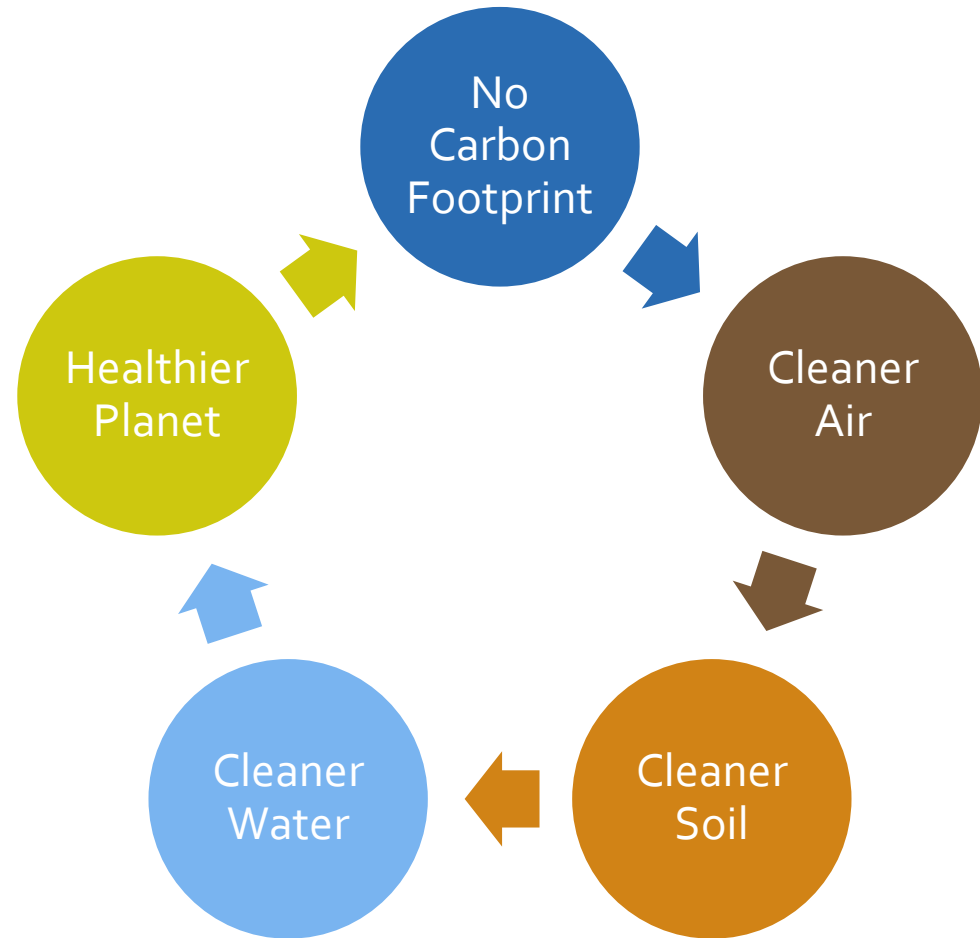


An average 10.5HP gasoline-powered salt spreader



The many advantages of an electric salt spreader:

- ❖ Fuel expense savings
- ❖ Repairs and downtime savings
- ❖ Push-button start
- ❖ A healthier planet for all



Are you ready to reduce your carbon
footprint?



Contact:
Stan Sadowski, President
Blizzard Busters, Inc.
(516)380-9326

www.BlizzardBustersInc.com

